



UNDERFLOOR HEATING

PRODUCT GUIDE 2026



**NOW INCLUDING OUR
PRESS FITTINGS
AND PLUMBING
PRODUCTS**



Download Catalogue Here

CONTENTS

Leading the Way in Underfloor Heating	03
Benefit of Underfloor Heating	04
C.A.D Service	05
Delivery Services and Warranties	06
Types of Floor Coverings	07
Screed Floor Construction	08
Suspended Flooring	09-11
Floating Floor Construction	12-13
Manifolds	14-15
Manifold Options	16-18
Electric Underfloor Heating	19
Multi Layer Pipe	20
Hetta Underfloor Heating Pipe	21
Complete UFH Packs	22
Thermostats and Controls	23-26
Pipe Connectors	27
Accessories and Tools	28-30
Press Fittings & Plumbing Products	31-39

LEADING THE WAY IN UNDERFLOOR HEATING

HETTA SPECIALISES IN STATE-OF-THE-ART UNDERFLOOR HEATING (UFH) FOR ALL FLOOR CONSTRUCTION TYPES AND FINISHES

Underfloor heating will provide you with consistent room temperatures – as well as improved air quality, more usable room space, total temperature control and energy savings of up to 30% compared to traditional heating systems.

UNDERFLOOR HEATING CAD DESIGN SERVICE

- The design team at Hetta are at hand to assist with all aspects of your underfloor heating requirements
- Utilising the latest software, we can accurately design and specify the correct underfloor heating solution for your chosen project. This includes heat loss calculations, flow rate settings, pipe layout diagrams and manifold positioning
- Fully indemnified and conforming to BS EN 12831 & BS EN1264

TECHNICAL SUPPORT AND CUSTOMER SERVICE

- All products from the Hetta range are backed by a comprehensive technical advisory service, available to provide advice and guidance on all aspects of application, design and installation

WHAT IS UNDERFLOOR HEATING?

Underfloor heating is a way of heating a home through strong and flexible tubing that is embedded in the floor. It is efficient and affordable, offering numerous advantages over radiators.

There are various types of underfloor heating systems available. The best underfloor heating solution for you will depend on a range of factors including your project type, your current heating system and energy source.

- Suitable for most properties
- Energy-efficient
- Maximizes space in the home
- Luxurious feeling of warm floors
- Flexible control through zoning areas of the home

BENEFITS OF UNDERFLOOR HEATING

HEATING EFFICIENCY

- Hetta underfloor heating is much more energy efficient than traditional central heating systems
- Operating at much lower temperatures, underfloor heating provides a constant, even desired heat to the designated areas, as and when required
- State of the art heating controls allows multi programmable settings whilst remaining completely user friendly

RADIANT HEAT

- Hetta underfloor heating disperses heat evenly across the floor area, eliminating cold spots and draft areas
- Much of the heat produced by traditional central heating systems is lost, whilst underfloor heating provides an extremely comfortable living environment as the heat produced warms from the base upwards

DESIGN FREEDOM

- No more unsightly wall hung radiators, means you can place your furniture where you want
- Hetta underfloor heating is completely invisible and is near to silent during operation

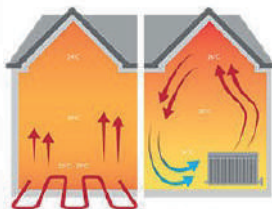
SUITABLE FOR EVERY PROJECT TYPE

- Hetta offers a diverse product range allowing for underfloor heating to be installed during new build or refurbishment
- Whether it is a full house project or a single room application, regardless of floor construction material, Hetta offers a solution
- You can easily integrate our underfloor heating systems with any existing heat source including renewable sources

MAINTENANCE FREE

- Hetta underfloor heating is produced to the highest specification, providing our customers with a lifetime of comfort
- Other than thermostat control there is virtually zero maintenance required with underfloor heating
- Once fitted, you can relax and enjoy the benefits. Hetta underfloor heating pipe comes with a 50 year manufacturer's warranty

Hetta underfloor heating system



Traditional central heating system

UNDERFLOOR HEATING DESIGN ASSIST AND C.A.D. SERVICE

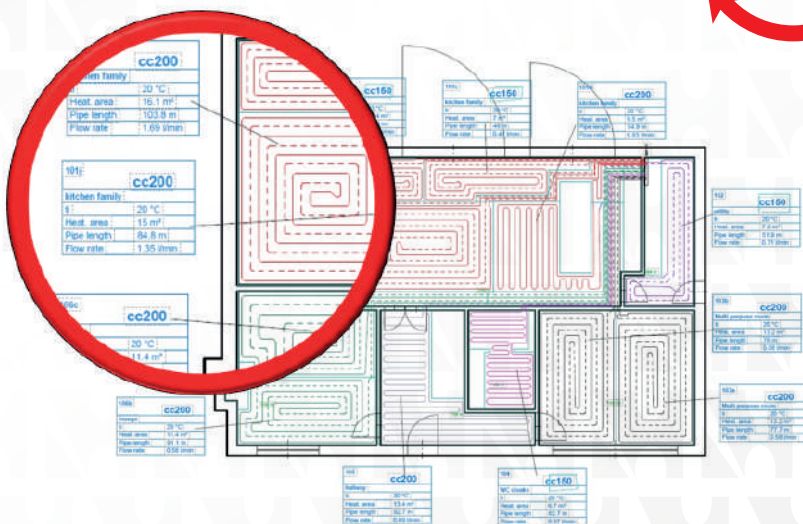
Hetta systems offer a full design and CAD service which includes Underfloor heating designs according to BS EN 1264. Professional CAD drawings will also be supplied with every system detailing all circuit information & manifold positions.

Renewable energy systems integration Underfloor heating systems are perfectly suited to work with a renewable energy heat source such as a Heat Pump or a Solar Thermal system. Our in-house design team can expertly specify & design a perfect system according to your bespoke requirements.

Using the latest in design simulation software, we can provide our customers with detailed system drawings & energy yields of the proposed renewable energy system which will integrate with your Underfloor heating system.

The Technical knowledge and experience of our fully trained Underfloor heating technical engineers are available at all stages of the project, offering expert advice and guidance to the highest standards such as:

- Comprehensive designs
- Circuit lengths with correct flow rates and pressure losses
- Detailed Drawings of floor plan layouts and circuits
- Dedicated Underfloor heating technical team



DELIVERY SERVICES AND WARRANTIES

All Underfloor Heating components at Hetta Systems are stock items and are available for National UK next day delivery on all orders placed before 3.30pm.

Our couriers will deliver between 8am - 6pm on day of delivery

*Next day delivery excludes Scottish Highlands, Ireland, Channel Islands & Isle of Man.



50 Year Warranty on Pipe

3 Year Warranty on Manifolds

2 Year Warranty on Thermostats and Controls

Lifetime Warranty on Electric UFH Mats and Cables

TYPES OF FLOOR COVERINGS

Most floor coverings are suitable for use with underfloor heating systems, below is a general overview of each floor covering.



TILE AND STONE FLOOR

Most ceramic and stone based floor coverings offer the least resistance to heat transfer which makes these coverings the ideal partner for underfloor heating. When fitting these products, it is advisable to use a flexible adhesive to allow for expansion and contraction to restrict the possibility of the finished floor from cracking or coming loose.



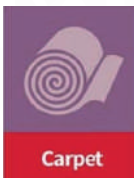
VINYL FLOOR

Vinyl flooring offers a low heat resistance, and most vinyl and plastic flooring can be used with underfloor heating



WOODEN FLOORS

Timber floors work well with underfloor heating. You will find that most underfloor heating should not exceed 27°C when wood flooring is laid. Care must be taken to ensure that the timber moisture content does not exceed 10% when the floor is laid, to prevent movement in the floor as the timber dries out.



CARPETS

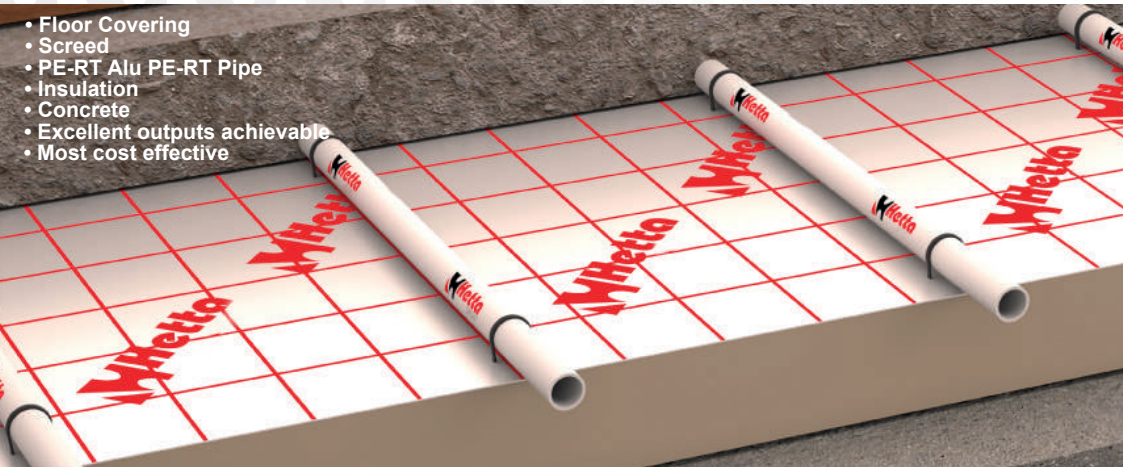
Carpet and underlay provides the highest heat resistance. You should make sure the underlay is suitable for the use with underfloor heating and has a low TOG value, the combined carpet and underlay should not exceed 1.5 TOG.

SCREED FLOOR CONSTRUCTION

For screeded floors the underfloor heating system is laid onto an insulation layer before the screed is poured, neatly containing all of the pipe work within the floor structure.

This system has the added advantage of maintaining the floor structure depth exactly the same as it would be without the heating system.

- Floor Covering
- Screed
- PE-RT Alu PE-RT Pipe
- Insulation
- Concrete
- Excellent outputs achievable
- Most cost effective



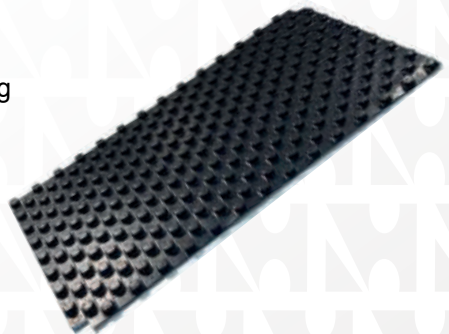
HSWSP01 – Wet Screed Panel 20mm

HSWSP02 – Wet Screed Panel 16mm

Made from 100% recycled high impact plastic. 100mm centres ensure accurate pipe spacing and even heat distribution. Each panel overlaps to form one continuous grid, reducing installation time.

Available in: 20mm for 16mm Pipe
16mm for 12mm Pipe

*Pattern allows for 100mm, 150mm, 200mm pipe centres

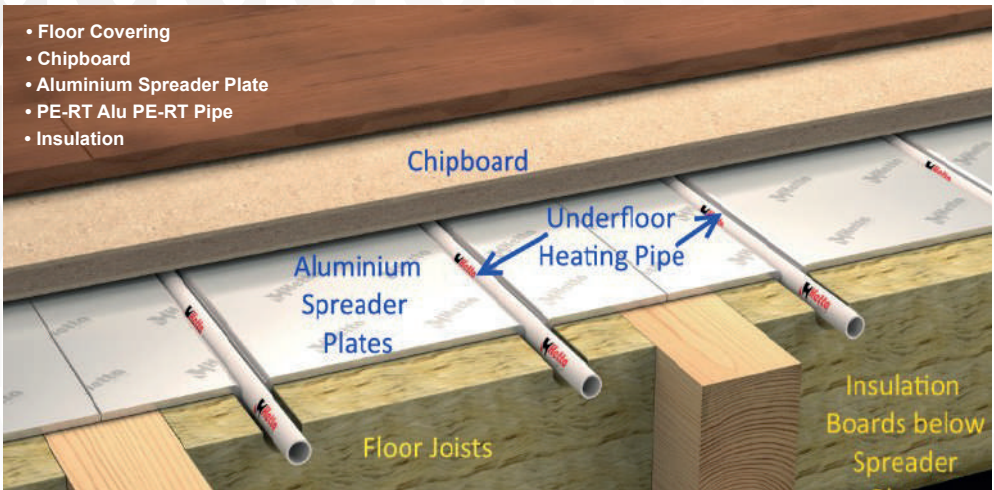


SUSPENDED FLOOR CONSTRUCTION

Suspended floor systems include joisted floors as well as solid floors with battens fixed to the floor.

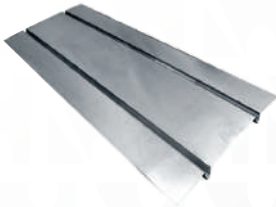
Hetta aluminium spreader plates are ideal for underfloor heating applications on suspended floor constructions.

The floor void must be insulated with either loose fill insulation or mineral wool insulation, and it is advised to minimise airflow to reduce the possibility of heat loss. For irregular joist widths cut the plates to fit.

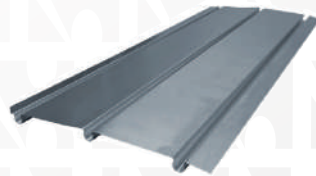


- Easy installation system
- Lightweight with excellent thermal conduction
- Suitable for standard joist sizes of 400mm

HSATP02 – Aluminium Double Plate

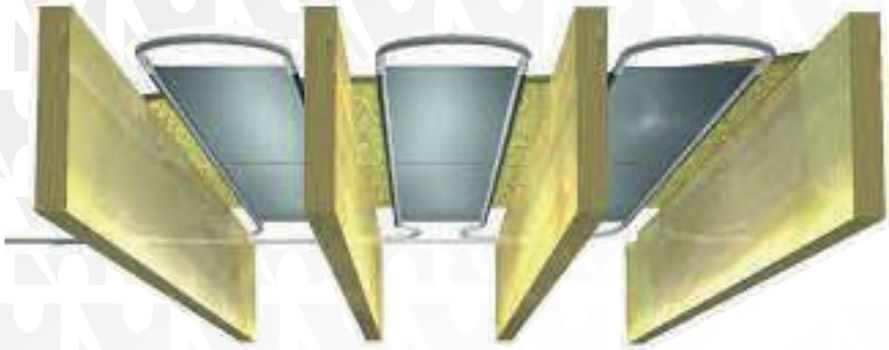


HSATP03 – Aluminium Triple Plate



SUSPENDED FLOOR CONSTRUCTION

Fit From Below High Output Aluminum Heat Diffuser Plates



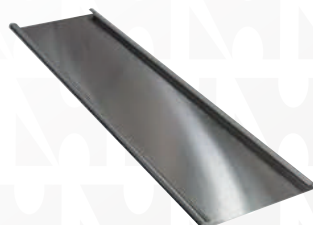
The easy install option to fit your between joist underfloor heating without lifting the floor – Specifically designed to be fitted from below to the underside of the floor, to hold pipes and spread the heat in a joisted floor installation. This 150mm wide plate allows 2 plates to be installed alongside each other within a standard 350mm wide joist cavity (or 3 plates within a 550mm wide joist cavity), therefore making it the ideal choice for Heat Pump Installations and high heat loss areas (Close 150 mm pipe spacing means increased heat output)

Simply screw the plates to the underside of the floor.

**FFB150 – Fit from Below
Spreader Plate 150mm Wide**



**FFB250 – Fit from Below
Spreader Plate 250mm Wide**



SUSPENDED FLOOR CONSTRUCTION

HSGCP - Chipboard Panel

22mm Grooved Chipboard Underfloor Heating Boards – 2400mm x 600mm x 22mm
Require 12mm Pipe with maximum circuit length 80 metres

- 1.44m² (2400 x 600 x 22mm)
- Routed out including radius return in the board 150mm centres
- 1 x 80 metre circuit covers 12m² .
- Feed pipes to the manifold typically run underneath
- A 6-9mm Ply Separating Layer must be bonded to the Chip Board before fitting finished floors
- Tongue and groove for faster installation

Our Chip-UFH Board is highly conductive which allows for an even spread of heat throughout the floor.

System should be completed with suitable plywood before laying final floor finish



INSTALLATION

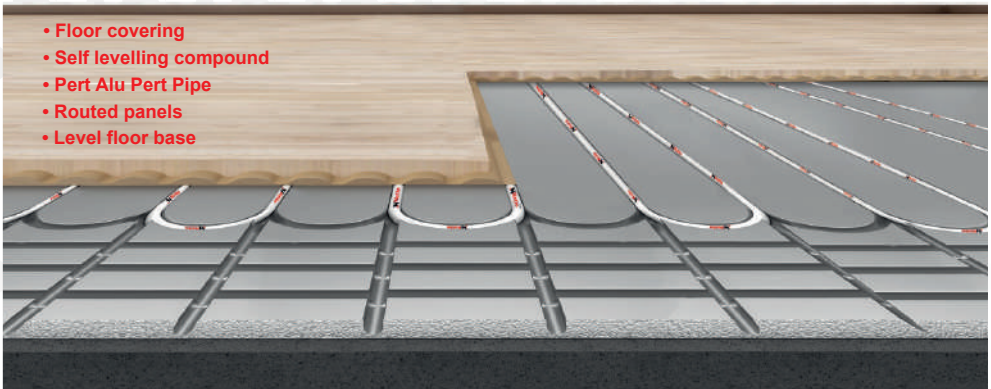
Routed Chip Board is typically installed directly onto floor joists with suitable screws and joint adhesive, minimizing floor build up.
(Joists usually insulated in-between with high density PIR),

FLOATING FLOOR CONSTRUCTION

The Hetta floating floor system has been uniquely developed to meet an increasing demand from clients requiring underfloor heating as a retro fit solution to existing floor areas.

The extruded polystyrene panels are foil coated and have a low thermal mass and consequently have a swift response time to changes in temperature.

The grooves in the insulation securely retain the underfloor heating pipe-work in the correct position eliminating the need for supplementary fixings.



- No need for screed, only raises floor by 20mm, no waiting for screed to dry, greatly reduced fitting costs
- Available with pipe spacing at 150mm if greater heat output is required
- Lightweight & easy to cut
- Lay directly on existing floor
- Panels include radius return for complete and easy install
- EPS400 – Can be tiled directly onto

HSEPS400-16 - Insulation EPS Panel **HSEPS400-20 - Insulation EPS Panel**

EPS low profile insulation panel
1200 x 600 with 150mm centers in both
20mm & 16mm depths

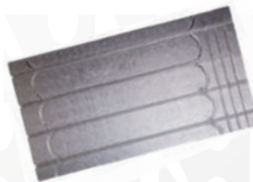
Available for
16mm & 12mm
pipe



HSEPS400FOILED – Foiled Insulation Panel

Foiled EPS low profile insulation panel
1200 x 600 x 20 mm with 150mm centers

Available for
16mm only



FLOATING FLOOR CONSTRUCTION

HETTA PROTHERM OVERLAY PANEL

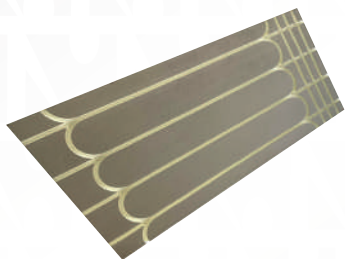
The Hetta Protherm overlay panel is a lightweight construction board designed for use with tiles, cement-based screeds and synthetic renders. It is manufactured from high density extruded polystyrene with a reinforced cement coating on the top and bottom surfaces providing excellent impact and compressive strength. The Protherm panel can be cut using conventional tools and has good bonding properties for direct application of cement-based tile adhesives.

The boards are Ideal for use in wet areas such as bathrooms and where there is exposure to moisture, for soft floor finishes, it is essential to cover the panel with a minimum of 10mm thick flexible, cement-based levelling screed. For wood paneling and wood laminate, the panel should be covered with a minimum of 7mm thick flexible, cement-based levelling screed.

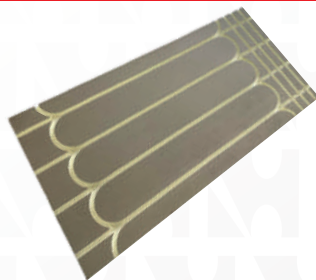
Note: Solvent based products must not be used. Also, the panels are not suitable for laying directly onto joists and must have a supporting floor surface such as plywood, floor grade chipboard or similar

Note: Use with our approved adhesive spray HSFD170 on page 29

HSPROTHERM-16MM (12MM PIPE)



HSPROTHERM-20MM (16MM PIPE)



TECHNICAL DATA

Total overall dimensions	1200mm x 600 mm x 16mm /20mm
Pipe Diameter	12mm OR 16mm
Thermal conductivity	0.033 W/mk
Pipe centres	150mm
Material	Cement Reinforced Surface XPS
Water Absorption	0.6%
Compression Strength	400 Kpa
Temperature Range	-50 deg to 75 deg Centigrade
Fire performance	BS 476 / EN13501-1 Class 0 / Euroclass E
Sound Reduction	BS EN ISO 10140-3 19dB (6mm)
Weight	2.48 kgs

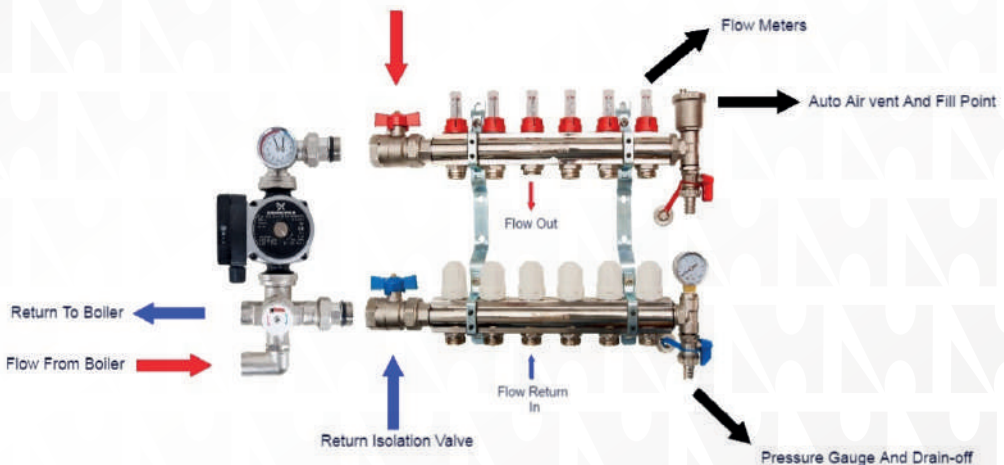
MANIFOLDS

The Hetta Systems underfloor heating manifolds are part pre-assembled and “ready for installation” with all the necessary components to aid a swift installation. The manifold distributes the primary warm heating water from your boiler, heat pump, buffer tank or thermal store evenly into each underfloor heating circuit, if there is a demand for heat within that relevant zone.

Our manifolds are available from 2-12 ports and are manufactured from Nickel Plated Extruded Brass which are ready assembled with Flow Meters, isolation Valves, Fill and Drain points and Actuator pins for immediate wall mounting.

Supplied pre mounted on installation brackets, Valves on the return manifold accept a thermoelectric type head for remote control of each zone. Quick reaction to supply temperature changes.

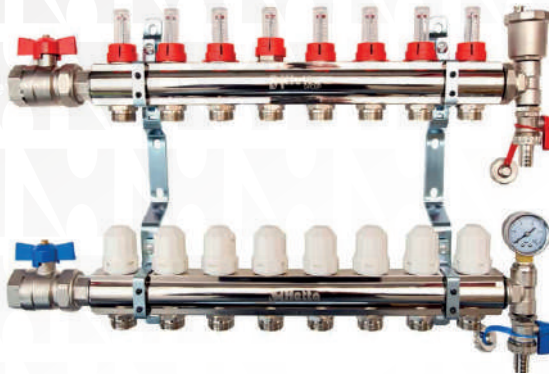
Note: Euro cone pipe connectors 16mm and blanking caps are ordered and supplied separately



MANIFOLDS

MANIFOLDS (PRE-ASSEMBLED)

- Hetta nickel plated pre-assembled distribution manifold
- Comes complete with isolating ball valves, adjustable flow meters, fill and drain points and automatic air vents
- Accepts manifold control pump pack



Code	Manifold Ports	Width W/O Pump	Width with Pump
HSMAN02	2 port Manifold	233 mm	388 mm
HSMAN03	3 port Manifold	283 mm	438 mm
HSMAN04	4 port Manifold	333 mm	488 mm
HSMAN05	5 port Manifold	383 mm	538 mm
HSMAN06	6 port Manifold	433 mm	588 mm
HSMAN07	7 port Manifold	483 mm	638 mm
HSMAN08	8 port Manifold	533 mm	688 mm
HSMAN09	9 port Manifold	583 mm	738 mm
HSMAN10	10 port Manifold	633 mm	788 mm
HSMAN11	11 port Manifold	683 mm	838 mm
HSMAN12	12 port Manifold	733 mm	888 mm

MANIFOLD OPTIONS

HSMZCP01 - MANIFOLD CONTROL PACK

- Provides controlled mixed temperature water to underfloor heating systems with a heat output up to 14kW
- Lightweight and compact in order to connect directly onto a standard manifold without the need for extra brackets or support
- The control pack consists of; mixing valve, A≤0.2EEI High Efficiency6 Grundfos Pump
- Used in conjunction with 2-12 port manifolds
- Compact bolt on unit providing quick and simple installation
- Easy set up within the adjustable range of 35°C to 65°C
- Controls flow temperature to +/- 2°C even with changing cer flow and return temperatures
- Manufactured to BS EN 1264-4



"This product is fully reversible to suit Left and Right side manifold positions"

MANIFOLD OPTIONS

HSBV01 – HETTA BLENDING VALVE

FEATURES

The mixing valve lets you set the flow temperature between 35 and 65°C for precise control to the overall temperature through the underfloor heating and can be fed by any type of heat source including oil and gas boilers, wood burning stoves and green energy sources such as solar, ground and air source heat pumps.



HSMEP01 – MANIFOLD ELBOW PACK (INCLUDING PUMP)

FEATURES

- 'A' rated pump (Grundfos)
- In-built 4-way deflector plate
- Integrated check valves for easy filling
- Temperature gauge
- Assembled in the UK: pre-tested, packaged and ready for instant installation
- 2 Year warranty
- Fully reversible (Left or Right sided manifold)
- Side or bottom entry connections



MANIFOLD OPTIONS

HSSZCP01 – SINGLE ZONE CONTROL PACK

- Provides controlled mixed temperature water to underfloor heating systems with a heat output up to 3kW
- Pre-assembled on fixing plate
- The control pack consists of; mixing valve, ≤0.2EEI High Efficiency Grundfos Pump

SPECIFICATION:

- Easy set up within the adjustable range of 35°C to 65°C
- Controls flow temperature to +/- 2°C even with changing boiler flow and return temperatures
- Manufactured to BS EN 1264-4



HSEANC02 – HETTA ELECTROTHERMIC ACTUATOR

- Hetta 230 volt actuator 2 wire, 3/4 " thread to manifold, normally closed



HSZV01 – HETTA ZONE VALVE

- The motorized zone valve has been designed to control the flow of water in iron and copper pipe systems. Although specifically designed for small bore central heating systems, the valve can be used in commercial and industrial applications.

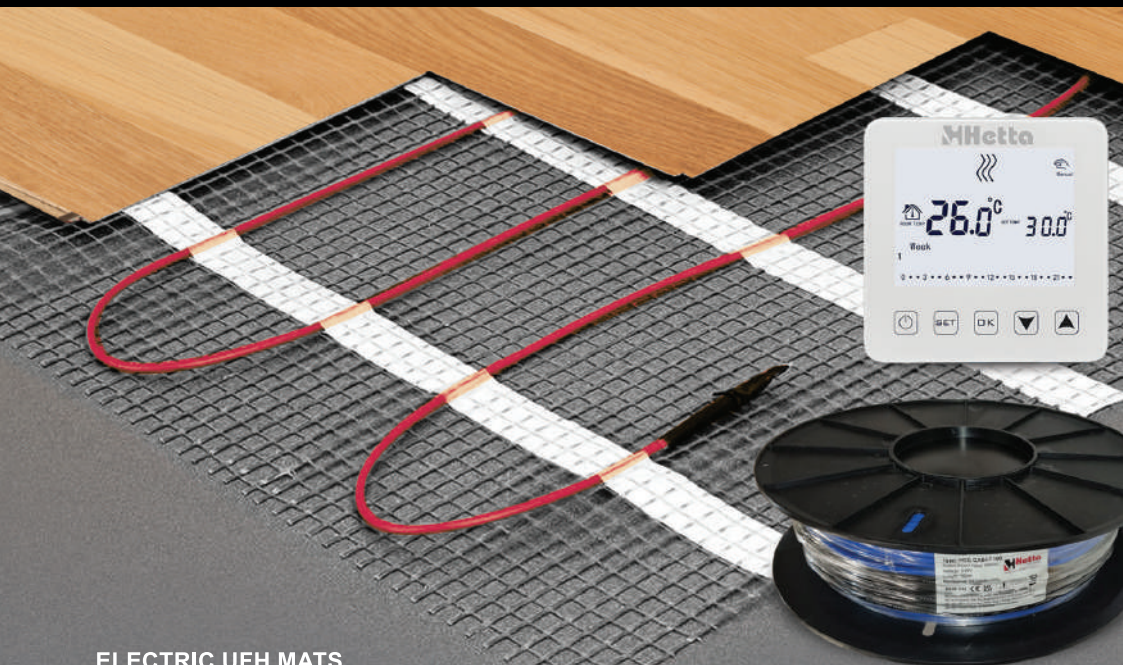


HSSPEXT01 - HETTA SINGLE PORT MANIFOLD EXTENSION PACK

- 1" Single Port Flow and Return Extension Set with 2 x manifold connections. It allows you to add an extra circuit to your existing manifold.



ELECTRIC UNDERFLOOR HEATING



ELECTRIC UFH MATS

Code	Description
HSE-MAT1	(1m2) - Electric Heating Mat
HSE-MAT1.5	(1.5m2) - Electric Heating Mat
HSE-MAT2	(2m2) - Electric Heating Mat
HSE-MAT2.5	(2.5m2) - Electric Heating Mat
HSE-MAT3	(3m2) - Electric Heating Mat
HSE-MAT4	(4m2) - Electric Heating Mat
HSE-MAT5	(5m2) - Electric Heating Mat
HSE-MAT6	(6m2) - Electric Heating Mat
HSE-MAT7	(7m2) - Electric Heating Mat
HSE-MAT8	(8m2) - Electric Heating Mat
HSE-MAT9	(9m2) - Electric Heating Mat
HSE-MAT10	(10m2) - Electric Heating Mat
HSE-MAT12	(12m2) - Electric Heating Mat

THERMOSTAT

Code	Description
HSE-HWSTAT	Hard Wired Electric Stat
HSE-WIFISTAT	WIFI Electric Stat

ELECTRIC UFH CABLE DRUMS

Code	Description
HSE-CABLE10	PVC Twin Conductor Cable (10m)
HSE-CABLE20	PVC Twin Conductor Cable (20m)
HSE-CABLE30	PVC Twin Conductor Cable (30m)
HSE-CABLE40	PVC Twin Conductor Cable (40m)
HSE-CABLE50	PVC Twin Conductor Cable (50m)
HSE-CABLE60	PVC Twin Conductor Cable (60m)
HSE-CABLE80	PVC Twin Conductor Cable (80m)
HSE-CABLE100	PVC Twin Conductor Cable (100m)
HSE-CABLE120	PVC Twin Conductor Cable (120m)
HSE-CABLE140	PVC Twin Conductor Cable (140m)
HSE-CABLE160	PVC Twin Conductor Cable (160m)

ACCESSORIES

Code	Description
HSE-BB6MM	Backer Board 1200 x 600 x 6mm
HSE-ACCESSORYKIT	Roller + Tape + Primer

MULTI LAYER PIPE



Hetta multi-layer underfloor heating pipe, made from a 5 layer composite material. Available in both Pert EVOH & Pert-Al-Pert, all Hetta underfloor heating pipe comes with a 50 year warranty. Both pipework types bring their whole range of advantages and are the ideal solution for heating installations in all types of buildings. Continue reading to find out more.

HETTA PERT EVOH

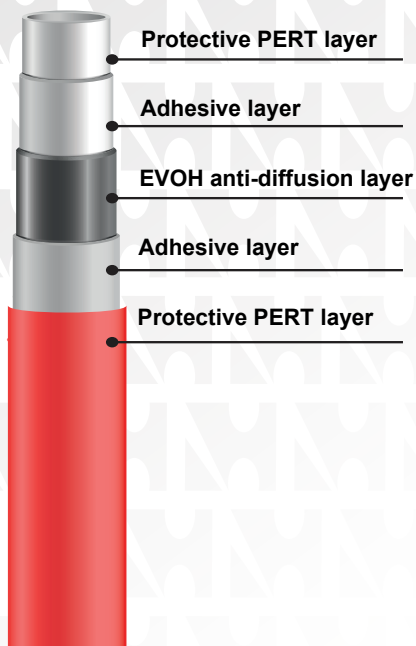


HETTA PERT-AL-PERT



HETTA UNDERFLOOR HEATING PIPE

EVOH-PERT pipe construction



Available in the following sizes - 16mm

HSEVOH100	100m Coil
HSEVOH150	150m Coil
HSEVOH200	200m Coil
HSEVOHS00	500m Coil

Available in the following sizes - 12mm

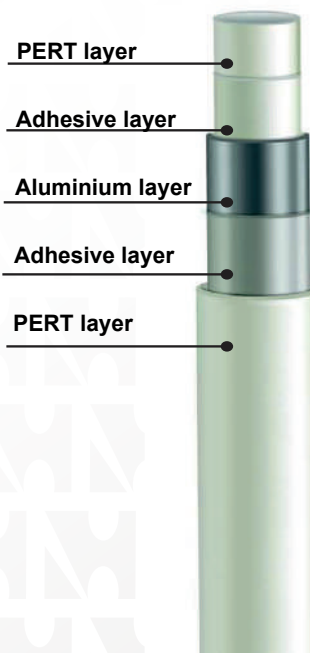
HSEVOH80-12MM	80m Coil
HSEVOH160-12MM	160m Coil

Available in the following sizes - 16mm

HSPAP50	50m Coil
HSPAP100	100m Coil
HSPAP150	150m Coil
HSPAP200	200m Coil
HSPAPS00	500m Coil

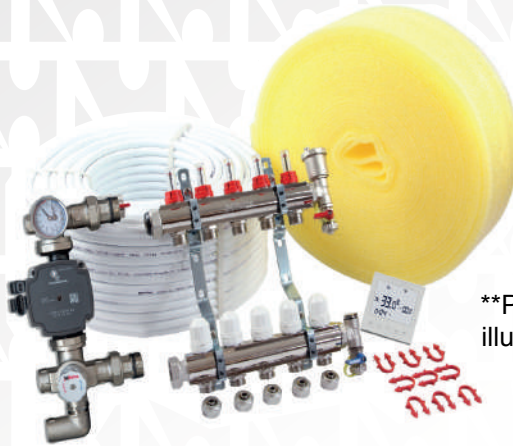
Available in the following sizes - 12mm

HSPAP80	80m Coil
HSPAP160	160m Coil



PERT-AL-PERT pipe construction

COMPLETE UFH PACKS



**Picture is for illustration purpose only

The Hetta complete underfloor heating single zone pack contains everything required to install an underfloor heating solution to your chosen floor area. These packs are only suitable for floor areas where one zone (thermostat) control is required.

Complete UFH packs have sufficient pipe supply for the specified floor area, based upon 200mm pipe centres, assuming the manifold is centrally located.

Manifolds are pre-assembled and include isolating ball valves, adjustable flow meters, fill and drain points, automatic air vents and pipe connectors for 16mm pipe.

Complete Underfloor Heating Packs

HSKIT20 - 20m² UFH Room Pack

(Includes 2-way Manifold)

HSKIT30 - 30m² UFH Room Pack

(Includes 2-way Manifold)

HSKIT40 - 40m² UFH Room Pack

(Includes 2-way Manifold)

HSKIT50 - 50m² UFH Room Pack

(Includes 3-way Manifold)

HSKIT60 - 60m² UFH Room Pack

(Includes 3-way Manifold)

EACH PACK INCLUDES THE FOLLOWING:

- Hetta PE-RT Alu PE-RT pipe
- Manifold control pack (Grundfos A rated pump)
- Ported manifold & pipe connectors
- Edge insulation
- Pipe staples
- Programmable room thermostat
- Installation guide

HETTA THERMOSTATS & CONTROLS

Hetta Systems offers a range of stylish room temperature controls enabling you to heat your home efficiently. No matter what kind of thermostat you are looking for, you are sure to find exactly what in you need in our extensive product range.

You will be able to control your home's temperature with ease thanks to our thermostats. There is one to suit every property, from manual control models to programmable thermostats. We're also pleased to stock innovative products such as Wi-Fi and smartphone-controlled thermostats, bringing this essential piece of heating control equipment in line with all the other technology that makes everyday life that little bit easier.



HETTA THERMOSTATS & CONTROLS

HM01PT – HETTA PROGRAMMABLE THERMOSTAT

FEATURES

- Backlit display
- 6 Period Programmable Temperature Control
- Internal External sensor
- Precise Temperature Display
- Built in Memory Function
- 230v



HM01RF – HETTA PROGRAMMABLE WIRELESS THERMOSTAT

FEATURES

- Backlit display
- 6 Period Programmable Temperature Control
- Precise Temperature Display
- Built in Memory Function Wireless
- Compact design
- Ideal for multi zone control
- Batteries included



HETTA THERMOSTATS & CONTROLS

HS01RF – HETTA WIRELESS PROGRAMMABLE THERMOSTAT KIT

FEATURES

- Backlit display
- 6 Period Programmable Temperature Control
- Precise Temperature Display
- Built in Memory Function
- Wireless
- Compact design
- Batteries included



HWC018 & HWC018RF – HETTA 8 ZONE WIRED WIRING / WIRELESS CENTRE

FEATURES

- Easy Installation
- Easy to Operate
- Multi Zone Control
- Wired/Wireless
- Indicator LEDs
- Compact Design
- 230v



SENSORPROBE - HETTA SENSOR PROBE

FEATURES

- This sensor can be used to measure air and floor temperature. This probe is supplied with a 3-meter cable which can be extended to 20 meters if required.



HETTA THERMOSTATS & CONTROLS



HS99WPT – HETTA WIFI THERMOSTAT

FEATURES

- Programmable thermostat with large LCD display
- 5 day, 5 + 1 day & 5 + 2 day timer options. 6 available time periods per day.
- Displays room temperature and setting temperature.
- Including built in sensor and option for external NTC probe
- Switched 230-volt output for control of wiring centres, boilers, and pumps.
- WIFI connectivity (No Hub Required)
- 2 Year Manufacturer's Guarantee



HS01WPT – HETTA WIFI THERMOSTAT

FEATURES

- Programmable thermostat with backlit LCD display
- 5 day, 5 + 1 day & 5 + 2 day timer options. 6 available time periods per day.
- Displays room temperature and setting temperature.
- Including built in sensor and option for external NTC probe
- Switched 230-volt output for control of wiring centres, boilers, and pumps.
- WIFI connectivity (No Hub Required)
- 2 year manufacturers guarantee



HS01WRF – HETTA WIFI THERMOSTAT AND RECEIVER KIT

FEATURES

- Programmable thermostat with backlit LCD display
- 5 day, 5 + 1 day & 5 + 2 day timer options. 6 available time periods per day.
- For use with single zone installations.
- Receiver included
- Switched 230-volt output for control of wiring centres, boilers, and pumps.
- WIFI connectivity (No Hub Required)
- 2 year manufacturers guarantee



PIPE CONNECTORS

COMPRESSION FITTINGS 16MM & 12MM



HSMC16
Manifold
Adaptor



HSBE01
3/4 " Manifold
Blanking Plug



HSSC16
16mm Comp
Coupling



HSEC16
16mm Comp
Elbow



HSECM16
16mm - 1/2 "
Connector



HSEC1615
16mm - 15mm
Copper Reducer



HSMC12
Manifold
Adaptor



HSSC12
12mm Comp
Coupling



HSEC12
12mm Comp
Elbow



*"Still looking for more Fittings,
go to page 31 to find our
full range of press fittings"*



Download Catalogue Here



ACCESSORIES AND TOOLS

HSPD01 – PIPE DECOILER

High Strength Underfloor Pipe De-coiler for easy un-wrapping and laying of underfloor heating pipes. Specifically designed to improve fitting efficiency and comfort, as well as dramatically speeding up installation. De-coiler holds all of our pipe coils from 50 meter to 500-meter coils.



HSPCIN01 – HETTA TACKER GUN

Provides a quick and easy method of fixing pipe staples to secure underfloor heating pipe into an insulated surface. It replaces the requirement for manual fitting and provides improved working comfort



HSPS90 - PIPE SUPPORT BEND

A vital accessory used to protect and support pipe between the manifold and where it enters the floor. Allows heating pipes to be bent 90-degrees without forming any kinks that may impede flow within the pipe. Accepts 15mm to 20mm pipe



HSPRT16 – PIPE REAMING TOOL

The pipe re-rounding tool is designed for use after cutting the pipework. This tool will ensure that the cut end is perfectly spherical and ensure that the connection (whether it to be coupling or a euro cone connector) will be fit perfectly as planned. This tool is best for 10, 12 and 16 pipe sizes.



ACCESSORIES AND TOOLS

HSEBS01 – EXTERNAL BENDING SPRING

Professional Bending Springs to assist in the bending of Pert-Al-Pert pipes. Specifically designed to ensure tight, unkinked bends can be formed. Ideal for use with our Pert-Al-Pert pipes.



HSTTPC50 – TACKER GUN STAPLES

50mm pipe fixing staples used with the Hetta universal aluminium staple gun (HSPCIN01). Supplied in quantities of 250.



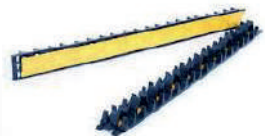
HSMP540 – MANUAL PIPE STAPLES

Barbed 40mm manual pipe staples used to manually fix underfloor heating pipe to high-density insulation panels, supplied in quantities of 200.



HSCR01 - SELF ADHESIVE PIPE RAIL

Self-adhesive plastic clip rail providing easy installation and ready made spacing. Ideal for applications where staples cannot be fixed.



HSEIN25 - EDGE INSULATION

25m x 150mm x 8mm Edge insulation, for use with screed applications eliminating heat loss.



ACCESSORIES AND TOOLS

HSPC50 - PIPE CONDUIT

Underfloor Heating (UFH) Black convoluted pipe / flexible corrugated conduit coil 22mm x 25m.



HSPCT01 – PIPE CUTTING TOOL

Professional grade ratchet pipe cutting tool, cleanly cuts all types of underfloor heating pipe.



HSFD170 - FAST DRY CONTACT ADHESIVE 500ML

FD170 polystyrene adhesive is a high solids, extremely tacky spray adhesive free from all chlorinated solvents. The fast-drying adhesive is developed for bonding polystyrene to itself and various substrates





HETTA SYSTEMS
PRESS FITTINGS
AND PLUMBING
PRODUCTS



PLUMBING COMPONENTS

Equal Press Tee

Hetta Equal Press Tee Fittings are used to branch off main distribution pipework, allowing effective distribution to multiple services.

Part no.	Description	Pack Qty
HSEPT16	Equal Press Tee 16x16x16mm	10
HSEPT20	Equal Press Tee 20x20x20mm	10
HSEPT25	Equal Press Tee 25x25x25mm	10
HSEPT32	Equal Press Tee 32x32x32mm	5
HSEPT40	Equal Press Tee 40x40x40mm	2
HSEPT50	Equal Press Tee 50x50x50mm	2



Reducing Press Tee

Hetta Reducing Press Tees are used to branch off main distribution pipework, allowing effective distribution to multiple services where reduction in size is required.

Part no.	Description	Pack Qty
HSRPT162016	Press Tee 16x20x16mm	10
HSRPT162516	Press Tee 16x25x16mm	10
HSRPT201616	Press Tee 20x16x16mm	10
HSRPT201620	Press Tee 20x16x20mm	10
HSRPT202016	Press Tee 20x20x16mm	10
HSRPT202520	Press Tee 20x25x20mm	10
HSRPT251625	Press Tee 25x16x25mm	10
HSRPT252020	Press Tee 25x20x20mm	10
HSRPT252025	Press Tee 25x20x25mm	10
HSRPT252520	Press Tee 25x25x20mm	10
HSRPT253225	Press Tee 25x32x25mm	10
HSRPT321632	Press Tee 32x16x32mm	5
HSRPT322032	Press Tee 32x20x32mm	5
HSRPT322532	Press Tee 32x25x32mm	5
HSRPT402040	Press Tee 40x20x40mm	2
HSRPT402540	Press Tee 40x25x40mm	2
HSRPT403240	Press Tee 40x32x40mm	2
HSRPT502550	Press Tee 50x25x50mm	2
HSRPT503250	Press Tee 50x32x50mm	2
HSRPT504050	Press Tee 50x40x50mm	2



PLUMBING COMPONENTS

Press Tee with Female

Hetta Press Tee with a BSP female thread connection situated on the branch.

Part no.	Description	Pack Qty
HSPTF16	Press Tee with Female Thread 16x1/2"x16mm	10
HSPTF20	Press Tee with Female Thread 20x1/2"x20mm	10
HSPTF25A	Press Tee with Female Thread 25x1/2"x25mm	10
HSPTF25B	Press Tee with Female Thread 25x3/4"x25mm	10
HSPTF32A	Press Tee with Female Thread 32x3/4"x32mm	5
HSPTF32B	Press Tee with Female Thread 32x1"x32mm	5
HSPTF40A	Press Tee with Female Thread 40x3/4"x40mm	2



Press Coupler/Press Reducer

Hetta Straight Press Couplers / Reducers are used where straight lengths in excess of 5m are required. By utilising the straight press fitting, multiple 5m lengths can be coupled together, giving the desired installation length.

Part no.	Description	Pack Qty
Coupler		
HSPC1616	Press Coupler 16x16mm	10
HSPC2020	Press Coupler 20x20mm	10
HSPC2525	Press Coupler 25x25mm	10
HSPC3232	Press Coupler 32x32mm	5
HSPC4040	Press Coupler 40x40mm	2
HSPC5050	Press Coupler 50x50mm	2
Reducers		
HSPR2016	Press Reducer 20x16mm	10
HSPR2516	Press Reducer 25x16mm	10
HSPR2520	Press Reducer 25x20mm	10
HSPR3216	Press Reducer 32x16mm	10
HSPR3220	Press Reducer 32x20mm	10
HSPR3225	Press Reducer 32x25mm	10
HSPR4020	Press Reducer 40x20mm	10
HSPR4025	Press Reducer 40x25mm	10
HSPR4032	Press Reducer 40x32mm	5
HSPR5025	Press Reducer 50x25mm	2
HSPR5032	Press Reducer 50x32mm	2
HSPR5040	Press Reducer 50x40mm	2

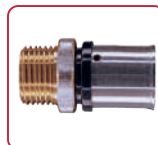


PLUMBING COMPONENTS

Straight Press to Male Connector

Hetta Straight Press to Male Connectors are used to connect MLCP to a wide variety of system components. The Male thread is a BSP connection and is also used in conjunction with plumbers' fittings to achieve final connections.

Part no.	Description	Pack Qty
HSSPM16A	Straight Press to Male Thread 16x1/2"	10
HSSPM16B	Straight Press to Male Thread 16x3/4"	10
HSSPM16C	Straight Press to Male Thread 16x1"	10
HSSPM20A	Straight Press to Male Thread 20x1/2"	10
HSSPM20B	Straight Press to Male Thread 20x3/4"	10
HSSPM20C	Straight Press to Male Thread 20x1"	10
HSSPM25A	Straight Press to Male Thread 25x3/4"	10
HSSPM25B	Straight Press to Male Thread 25x1"	10
HSSPM25C	Straight Press to Male Thread 25x1/2"	10
HSSPM32A	Straight Press to Male Thread 32x1"	5
HSSPM32B	Straight Press to Male Thread 32x1 1/4"	5
HSSPM32C	Straight Press to Male Thread 32x3/4"	5
HSSPM40A	Straight Press to Male Thread 40x1 1/4"	2
HSSPM50A	Straight Press to Male Thread 50x1 1/2"	2
HSSPM50B	Straight Press to Male Thread 50x2"	2



Straight Press to Female Connector

Hetta Straight Press to Female BSP Connectors are used to connect MLCP to a wide variety of system components. The Female thread is a BSP connection and is also used in conjunction with plumbers' fittings to achieve final connections.

Part no.	Description	Pack Qty
HSSPF16A	Straight Press to Female Thread 16x1/2"	10
HSSPF16B	Straight Press to Female Thread 16x3/4"	10
HSSPF16C	Straight Press to Female Thread 16x1"	10
HSSPF20A	Straight Press to Female Thread 20x1/2"	10
HSSPF20B	Straight Press to Female Thread 20x3/4"	10
HSSPF20C	Straight Press to Female Thread 20x1"	10
HSSPF25A	Straight Press to Female Thread 25x3/4"	10
HSSPF25B	Straight Press to Female Thread 25x1"	10
HSSPF25C	Straight Press to Female Thread 25x1/2"	10
HSSPF32A	Straight Press to Female Thread 32x1"	5
HSSPF32B	Straight Press to Female Thread 32x3/4"	5
HSSPF40A	Straight Press to Female Thread 40x1 1/4"	2
HSSPF50A	Straight Press to Female Thread 50x1 1/2"	2



PLUMBING COMPONENTS

Straight Press to Female Thread Connector (Swivel)

Hetta Straight Press to Female Thread Connectors with a swivel nut are used to connect MLCP to a wide variety of system components.

Part no.	Description	Pack Qty
HSSPSW16	Straight Press with Female Swivel Connector 16x1/2"	10
HSSPSW16A	Straight Press with Female Swivel Connector 20x1"	10
HSSPSW20	Straight Press with Female Swivel Connector 20x3/4"	10
HSSPSW25	Straight Press with Female Swivel Connector 25x1"	10
HSSPSW25A	Straight Press to Female Swivel Connector 25x3/4"	10
HSSPSW32	Straight Press to Female Swivel Connector 32x1"	5



90° Press Elbows

Hetta Press Elbows 45° and 90° are used to achieve a tight bend, where a radius bend would be unachievable or undesirable.

Part no.	Description	Pack Qty
HSELBO16	90° Press Elbow 16mm	10
HSELBO20	90° Press Elbow 20mm	10
HSELBO25	90° Press Elbow 25mm	10
HSELBO32	90° Press Elbow 32mm	5
HSELBO40	90° Press Elbow 40mm	2
HSELBO50	90° Press Elbow 50mm	2



90° Press Reducing Elbow

Hetta Press Reducing Elbow changes a pipe's direction by 90 degrees, uses a press-fit connection system, and connects two pipes of different sizes (reducing).

Part no.	Description	Pack Qty
HSRELBO2016	Press 90° Reducing Elbow 20x16mm	10
HSRELBO2516	Press 90° Reducing Elbow 25x16mm	10
HSRELBO2520	Press 90° Reducing Elbow 25x20mm	10
HSRELBO3220	Press 90° Reducing Elbow 32x20mm	5
HSRELBO4025	Press 90° Reducing Elbow 40x25mm	2
HSRELBO5040	Press 90° Reducing Elbow 50x40mm	2



Press Stop End

Hetta Press Stop Ends are used for quickly and permanently blanking.

Part no.	Description	Pack Qty
HSPSE16	Press Stop End 16mm	10



PLUMBING COMPONENTS

Press Elbow to Male Thread Connector

Hetta Press Elbow to Male BSP connectors are to be used when a 90° elbow is required when joining to a BSP connection.

Part no.	Description	Pack Qty
HSPeM16A	Press Elbow to Male Thread Connector 16x1½"	10
HSPeM16B	Press Elbow to Male Thread Connector 16x¾"	10
HSPeM20A	Press Elbow to Male Thread Connector 20x1½"	10
HSPeM20B	Press Elbow to Male Thread Connector 20x¾"	10
HSPeM25A	Press Elbow to Male Thread Connector 25x1/2"	10
HSPeM25B	Press Elbow to Male Thread Connector 25x1"	10
HSPeM25C	Press Elbow to Male Thread Connector 25x3/4"	10
HSPeM32A	Press Elbow to Male Thread Connector 32x1"	5
HSPeM40A	Press Elbow to Male Thread Connector 40x1"	2



Press Elbow to Female Thread Connector

Hetta Press Elbow to Female Thread connectors are to be used when a 90° elbow is required when joining to a BSP connection.

Part no.	Description	Pack Qty
HSPEF16A	Press Elbow to Female Thread Connector 16x1½"	10
HSPEF16B	Press Elbow to Female Thread Connector 16x3/4"	10
HSPEF20A	Press Elbow to Female Thread Connector 20x1½"	10
HSPEF20B	Press Elbow to Female Thread Connector 20x¾"	10
HSPEF25A	Press Elbow to Female Thread Connector 25x1/2"	10
HSPEF25B	Press Elbow to Female Thread Connector 25x1"	10
HSPEF25C	Press Elbow to Female Thread Connector 25x3/4"	10
HSPEF32A	Press Elbow to Female Thread Connector 32x1"	5
HSPEF40A	Press Elbow to Female Thread Connector 40x1 1/2"	2
HSPEF50A	Press Elbow to Female Thread Connector 50x1 1/2"	2



PLUMBING COMPONENTS

Press Wall Plate Elbow

Hetta Press Wall Plate Elbows allow an outside tap or other similar connection to be piped in MLCP and adapts to a 1/2" or 3/4" Female thread.

Part no.	Description	Pack Qty
HSPWPE16	Press Wall Plate Elbow 16x1/2" FT	10
HSPWPE20	Press Wall Plate Elbow 20x1/2" FT	10



Press to Copper Tail

Hetta MLCP-to-copper transition tails feature a U-profile MLCP press fitting, enabling seamless and reliable integration with copper pipes via press, compression, or soldered connections. Designed for efficiency and versatility, these transition tails simplify installation across a variety of plumbing systems.

Part no.	Description	Pack Qty
HSPCCT161530	16x15mm Press to Copper Compression Tail - Tail length 30mm	10
HSPCCT201530	20x15mm Press to Copper Compression Tail - Tail length 30mm	10
HSPCCT202230	20x22mm Press to Copper Compression Tail - Tail length 30mm	10
HSPCCT252230	25x22mm Press to Copper Compression Tail - Tail length 30mm	10
HSPCCT252830	25x28mm Press to Copper Compression Tail - Tail length 30mm	10
HSPCCT322830	32x28mm Press to Copper Compression Tail - Tail length 30mm	5



PLUMBING COMPONENTS

Press Radiator Connection Elbow

Hetta Press Radiator Connection Elbow. Suitable for use with all our MLCP Pipes.

Part no.	Description	Pack Qty
HSPRCE01	16 x 15 mm Press Radiator Connection Elbow	5



Pre insulated MLCP

Pre insulation MLCP available with 9mm or 13mm Insulation.

Part no.	Description	Pack Qty
HSINS16BLUE-100M	Pre-insulated MLCP 16x2mm-Blue	1
HSINS16RED-100M	Pre-insulated MLCP 16x2mm-Red	1
HSINS20BLUE-50M	Pre-insulated MLCP 20x2.25mm-Blue	1
HSINS20RED-50M	Pre-insulated MLCP 20x2.25mm-Red	1
HSINS25BLUE-50M	Pre-insulated MLCP 25x2.5mm-Blue	1
HSINS25RED-50M	Pre-insulated MLCP 25x2.5mm -Red	1
HSINS32BLUE-25M	Pre-insulated MLCP 32x2.5mm -Blue	1
HSINS32RED-25M	Pre-insulated MLCP 32x2.5mm -Red	1



Larger MLCP

Hetta PERT-AL-PERT pipe boasts a multi-layered composition of aluminium and raised temperature polyethylene (PERT), ensuring unmatched performance across diverse applications.

Part no.	Description	Pack Qty
HSPAP100-20MM	20mm Coil x 100m	1
HSPAP50-20MM	20mm Coil x 50m	1
HSPAP50-25MM	25mm Coil x 50m	1
HSPAP50-32MM	32mm Coil x 50m	1



PLUMBING COMPONENTS

Straight Pipe Lengths

Hetta MLCP, PE-RT/AL/PE-RT, overlap welded aluminum multilayer 100% barrier composite pipe, supplied in 2.5m straight lengths.

Part no.	Description	Pack Qty
HSPAPSL16	Pert-Al-Pert Straight Length 16mm x 3m	10
HSPAPSL20	Pert-Al-Pert Straight Length 20mm x 3m	10
HSPAPSL25	Pert-Al-Pert Straight Length 25mm x 3m	10
HSPAPSL32	Pert-Al-Pert Straight Length 32mm x 3m	10
HSPAPSL40	Pert-Al-Pert Straight Length 40mm x 3m	10
HSPAPSL50	Pert-Al-Pert Straight Length 50mm x 3m	10



Pressing Tools

Hetta Battery operated Pressing Tool suitable for pressing fittings from 16-32mm. The tool is supplied with a rechargeable battery and a charger and u-shape jaws.

Part no.	Description	Pack Qty
HSBATPT01	Pressing Tool (16-32mm)	1



Hetta Manual Pressing Tool suitable for pressing 16-32mm press fittings.

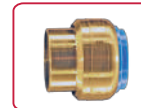
Part no.	Description	Pack Qty
HSMANPT01	Manual Pressing Tool	1



Smart Push End Cap

Hetta Smart Push End Cap is an essential component, designed for quick, reliable, and secure pipe terminations.

Part no.	Description	Pack Qty
HSSPEC16	Smart Push End Cap - 16mm	10
HSSPEC20	Smart Push End Cap - 20mm	10
HSSPEC25	Smart Push End Cap - 25mm	10



Single Hinged Pipe Clip

Hetta Single Hinged Pipe Clip provides a secure and reliable solution for plumbing and gas applications. Made from durable polypropylene, the Hetta hinged pipe clip ensures easy installation and long-lasting performance

Part no.	Description	Pack Qty
HSSHPC16	16mm Single Hinged Pipe Clip	100
HSSHPC20	20mm Single Hinged Pipe Clip	50
HSSHPC25	25mm Single Hinged Pipe Clip	50



UNDERFLOOR HEATING

PRODUCT GUIDE 2026

Quotation Requirements

Heat Source:

Project

Floor Makeup:

Room Size(s):

1
2
3
4
5

Manifold Location (Distance):

Wiring Option:
Thermostat

Wifi
Wired
Wireless

Notes:

Your Local Hetta Representative:

ISSUE 22

